

10. Maintenance Cleaning

The following points have to be considered during the inspection:

- 1) All screws for installing the devices or parts of the device have to be tightly connected and must be corroded.
- 2) There must not be any deformations on the housing, color lenses, fixations and installation spots (Ceiling, suspension, trussing)
- 3) Mechanically moved parts must not show any traces of wearing and must not rotate with unbalances.
- 4) The electric power supply cables must not show any damage, material fatigue or sediments

Further instructions depending on the installation spot and usage have to be adhered to by a skilled installer and any safety problems have to be removed.



CAUTION!

Disconnect from mains before starting maintenance operation.

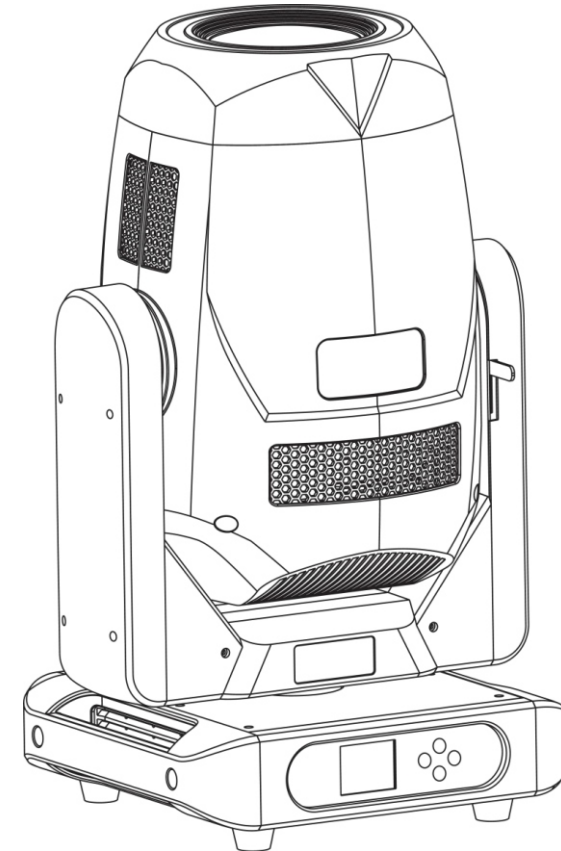
In order to maintain the lights in good condition and extend the life time, we suggest a regular cleaning of the lights.

- 1) Clean the inside and outside lens each week to avoid the weakness of the lights due to accumulation of dust.
- 2) Clean the fan each week.
- 3) A detailed electric check by an approved electrical engineer every three months, make sure the circuit contacts are in good condition, prevent the poor contact of circuit from overheating.

We recommend a frequent cleaning of the device. Please use a moist, lint-free cloth. Never use alcohol or solvents. There are no serviceable parts inside the device. Please refer to the instructions under Installation instructions.

PLUSlite

VERO 700 BSWP - PL700



USER MANUAL

1.Unpacking

Thank you for choosing VERO700. For your own safety, please read this manual before installing the device. This manual covers the important information on installation and applications. Please operate the fixture with following instructions. Meanwhile, please keep this manual well for future needs.

The VERO profile 700 is made of new type of high temperature strength of engineering plastics and cast aluminum casing with nice outlook. The fixture is designed and manufactured strictly following CE standards, complying with international standard DMX512 PROTOCOL.

It's available independently controlled and linkable with each other for cooperation. And it is applicable for large-scale live performance, theater, studio, nightclubs and disco.

VERO700 adopts powerful 580W LED which features high brightness and stability. Please carefully unpack it when you receive the fixture and check whether it is damaged during the transportation. And please check whether the following items are including inside the box:

Moving head light -----One
Omega-----Two
Signal Cable-----One
Power Cable-----One
User Manual-----One

FEATURE

- Prism: 1 pcs rotating prism (3, 4, 5, 8, 16 facet option)
- Iris: Linear adjustable with macro
- Soft lighting: 1 pcs independent scrim
- Focus: DMX 512 linear focus
- Dimmer: 0-100% linear dimmer
- Strobe: Electronic strobe, 0.3-20 Times/SEC
- Zoom: Smooth and fast speed
- Angle: 6.5°-42° linear adjustment
- Prism angle can option
- Control mode: DMX512, Protocols RDM, Wireless and Art-Net
- Standard mode 38 channels, Sound control mode, Stand-alone, Self-inspection mode

FRAMING SYSTEM

- Motorized framing system with 4 focal planes
- 4 Blades that move separately
- Smooth, flexible blade movements at variable speed
- Framing system indexable 180 degrees

OTHER FUNCTION

- DMX Software update
- Show software version number
- Intelligent control of wind speed
- Display lamps and lanterns use time
- 100% brightness without stroboscopic problem
- Manual programming function
- Manual fine calibration function
- DMX and RDM data in/out, artnet, wireless

POWER

- Input voltage: 100V~240V AC 50/60Hz
- Rate power: 800W@220V

HOUSING

- Intellectual property rights of appearance and structure design
- Environmentally friendly flame retardant materials
- High temperature resistant engineering plastics

IP GRADE

- IP:20

DIMENSION AND WEIGHT

- Carton size: 750*460*520MM
- Flight case size (2in1): 940X470X870 (MM)
- Net weight: 25KG

27	Frame 1B	0~255	
28	Frame 2A	0~255	
29	Frame 2B	0~255	
30	Frame 3A	0~255	
31	Frame 3B	0~255	
32	Frame 4A	0~255	
33	Frame 4B	0~255	
34	Frame angle	0~7	No effect
		8~239	Angle
		240~255	Rotate left and right
35	Frame angle fine	0~255	
36	Frame macro	0~3	No effect
		4~255	Total 63 effects
37	Scan speed	0~255	Fast to slow
38	Reset	20~29	Reset all

9. Specification

OPTICS

- Light Source :580W White LED Module
- Lumen: 20,500
- Lifetime: 50000 Hours
- Color temperature:7000K
- CRI: at least 70, CT 7000K
- CRI: at least 90, CT 5700K

MOVEMENT

- Pan movement:540°(16 bit)
- Tilt movement :270°(16 bit)
- Automatic reset function

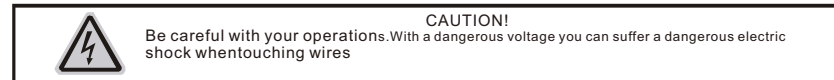
COLORS

- Linear CMY+CTO
- Colors wheel:1+6colors

GOBOS

- Gobos wheel:1pcs rotation Gobo wheel +1pcs fixed Gobo wheel
- Animation wheel

2.Safety instructions



This device has left the factory in perfect condition. In order to maintain this condition to ensure a safe operation, it is absolutely necessary for the user to follow the safety instructions and warning notes written in this user manual.

If the device has been exposed to temperature change due to environmental changes, do not switch it on immediately. The arising condensation could damage the device. Leave the device switched off until it has reached room temperature.

3. Operate on instruction

- The moving head is for beam spot wash effect for onsite decoration purpose.
- Don't turn on the fixture if it's been through severe temperature difference like after transportation, because it might damage the light due to the environment changes.
- So make sure to operate the fixture until it is normal temperature.
- This light should be kept away from strong shaking during any transportation or movement.
- Don't pull up the light by only the head, or it might cause damages to the mechanical parts.
- Don't expose the fixture in overheat, moisture or environment with too much dust when installing it.
- And don't lay any power cables on floor. Or it might cause electronic shock to the people.
- Make sure the installation place is in good safety condition before installing the fixture.
- Make sure to put the safety chain and check whether the screws are screwed properly when installing the fixture.
- Make sure the lens are in good condition. It's recommended to replace the units if there are any damages or severe scratch.
- Make sure the fixture is operated by qualified person who knows the fixture before using.
- Keep the original packages if any second shipment is needed.
- Don't try to change the fixtures without any instruction by the manufacturer or the appointed repairing agencies.
- It is not in warranty range if there are malfunctions from not following the user manual to operate or any illegal operation, like shock short circuit, electronic shock, lamp broke, etc.

4. Mounting and Installation

Cautions:

For added protection mount the fixture in areas outside walking paths, seating areas, or in areas where the fixture might be reached by unauthorized personnel. Before mounting the fixture to any surface, make sure that the installation area can hold a minimum point load of 10 times the device's weight. Fixture installation must always be secured with a secondary safety attachment, such as an appropriate safety cable.

Never stand directly below the device when mounting, removing, or serving the fixture from a ceiling, or set on a flat level surface (see illustration below). Be sure this fixture is kept at least 0.5m (1.5ft) away from any flammable materials (decoration etc.)

Always use and install the supplied safety cable as a safety measure to prevent accidental damage and/or injury in the event the clamp fails.

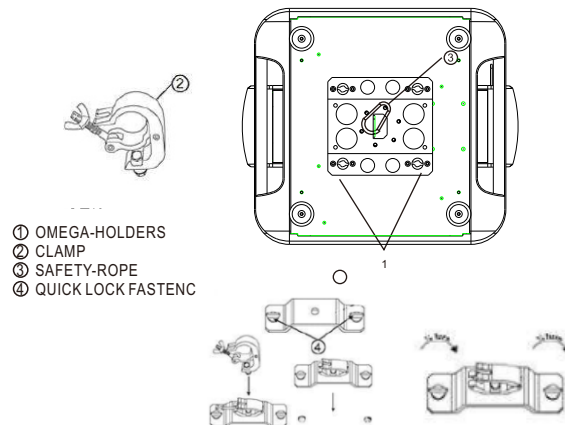
Mounting points:

Overhead mounting requires extensive experience, including amongst others calculating working load limits, a fine knowledge of the installation material being used, and periodic safety inspection of all installation material and the fixture. If you lack these qualifications, do not attempt the installation yourself. Improper installation can result in bodily injury.

Be sure to complete all rigging and installation procedures before connecting the main power cord to the appropriate wall outlet

Clamp mounting:

The VERO profile 700 provides a unique mounting bracket assembly that integrates the bottom of the base, the included OMEGA BRACKET, and the safety cable rigging point in one unit (See the illustration below). When mounting this fixture to truss, be sure to secure an appropriately rated clamp to the included omega bracket using an M10 screw fitted through the center hole of the OMEGA BRACKET.



15	Strobe	0~3	Open
		4~67	Strobe 1
		68~99	Strobe 2
		100~131	Strobe 3
		132~175	Strobe 4
		176~247	Strobe 5
16	Dimmer mode	248~251	Random strobe1
		252~255	Random strobe2
		0~63	Refresh rate 1200(dimmer auto delay)
		64~127	(dimmer no delay)
17	Prism	128~191	Refresh rate 13672(dimmer auto delay)
		192~255	(dimmer no delay)
		0~31	No effect
		32~255	Prism
18	Prism rotation	0~3	Prism is 0
		4~123	Prism angle
		124~187	Rotate left
		188~191	Stop
		192~255	Rotate right
19	Zoom	0~255	
20	Zoom fine	0~255	
21	Focus	0~255	
22	Focus fine	0~255	
23	Iris	0~127	Open to close
		128~135	Close
		136~173	Iris movement 1
		174~211	Iris movement 2
		212~249	Iris movement 3
24	Frost	250~255	Close
		0~9	No effect
		10~255	Liner frost
25	Animation wheel	0~7	No effect
		8~239	Animation effect
		240~255	Rotate left and right
26	Frame 1A	0~255	

Note:

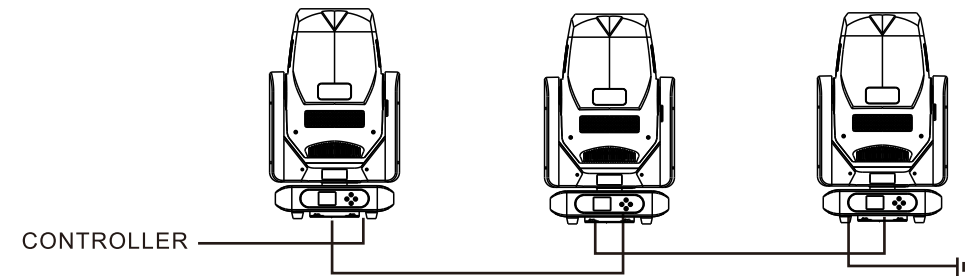
1. Above all projects to the actual lighting shall prevail, no notice if there is further modification;
2. The programming function provides only a very limited operation, in the case of no control units to use. Generally do not recommend the use of manual programming;
3. In the absence of the DMX512 signal, only need to set up first items, namely the address code can be used lamps.

8. 38 Control Channels

1	Pan	0~255	
2	Pan fine	0~255	
3	Tilt	0~255	
4	Tilt fine	0~255	
5	Colour wheel	0~63	6 colours
		64~221	Colour Arbitrary positioning
		222~239	Rotate left
		240~255	Rotate right
6	Cyan	0~255	
7	Magenta	0~255	
8	Yellow	0~255	
9	Colour temperature	0~255	
10	Fixed gobo	0~71	8 gobos
		72~143	Gobo Arbitrary positioning
		144~199	Rotate left
		200~255	Rotate right
11	Rotating gobo	0~63	7 gobos
		64~135	Gobo Arbitrary positioning
		136~195	Rotate left
		196~255	Rotate right
12	Gobo rotation	0~3	No effect
		4~123	Rotating gobo angle
		124~187	Rotate left
		188~191	Stop
		192~255	Rotate right
13	Dimmer	0~255	
14	Dimmer fine	0~255	

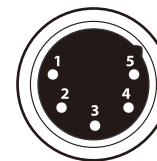
5. DMX 512 Control connection

Connect the provide XLR cable to the female 5 pin XLR Output of your control and the other side to the male 5-pin XLR input of the moving head. You can chain multiple Moving head together through serial linking. The cable needed should be two core, screened cable with XLR input and output connectors. Please refer to the diagram below. DMX-512 Connection with DMX terminator.



For installations where the DMX cable has to run a long distance or is in an electrically noisy environment such as in a disco, it is recommended to use a DMX terminator. This helps in preventing corruption of the digital control signal by electrical noise. The DMX terminator is simply an XLR plug with a 120 resistor connected between pins 2 and 3, which is then plugged into the output XLR socket of the last fixture in the chain. Please see illustrations.

**DMX - INPUT
XLR plug**



- Pin1 : GND - Shield
- Pin2 : - Signal
- Pin3 : + Signal
- Pin4 : N/C
- Pin5 : N/C

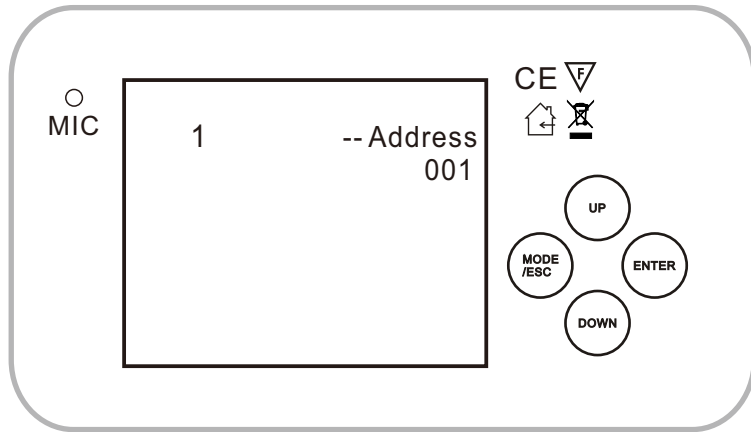


**DMX - OUTPUT
XLR socket**

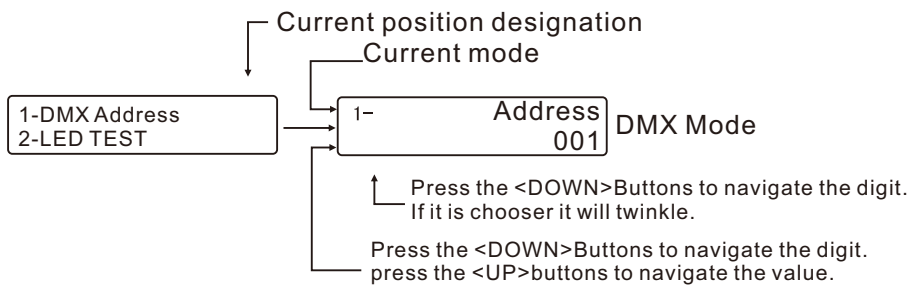
120 Ω

The control Display

6. Top menu, present the current operation



Press the <UP> or <DOWN> button repeatedly until you reach the desired menu function. Press the <ENTER> button to select the menu function currently displayed, or to enable menu option. To return to the previous option or menu without changing the value, press the <MODE/ESC> button.



Power on the moving head light, press the <MODE/ESC> or <ENTER> button, no any movement.

7. Menu for Control Display

MASTER PROJECT		INSTRUCTION FOR USE
INFORMATION	ADDRESS	1~512
	RUNTIME	TIME
	VERSION	
	TEMPERATURE	MAIN BOARD
		LIGHT SOURCE
	FAN SPEED	G1
		G2
SETTING	RESET	REBOOT
		DEFAULT DATA
	CHANNEL SET	38
	SIGNAL	DMX512/ARTNET/PROGRAM
	OFFLINE SET	HOME/HOLD
	FAN MODE	NORMAL/PERFORMANCE/QUIET
	WIRELESS SET	ON/OFF
	ADJUST	
	ARTNET SET	IP address
		Subnet mask
		Universe
LAMP	AUTO ON	NC
	LIGHT UP	NC
	LAMP ADJUST	NC
	LAMP FAIL	NC
DISPLAY	LANGUAGE	ENGLISH/CHINESE
	BACKLIGHT	ON/OFF/FLASH
	REVERSE	ON/OFF
USER	SETTING LOCK	input code
	KEY LOCK	ON/OFF
	TEST	ON/OFF
	PROGRAM	SELECT PROGRAM 1~8
		PROGRAM 1~8